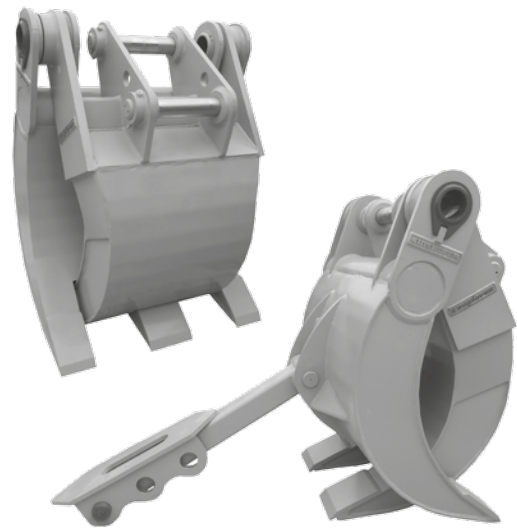


Contractor Grapple

CG

Being a robust mechanical contractor grab with five strong, interlocking tines - for excavators from 16t / 35200 lbs up to 54t / 118800 lbs operating weight - the CG-series grapples are ideal for demolition, material handling and sorting of all kinds such as rocks, scrap and other debris.

- **No additional hydraulics** required.
- Available as **pin-on attachment** (fixed mount) or with **pin-grabber coupler** (quick hitch).
- **Wear-resistant fine grain steel** in the construction of shell interior and tines.
- **Mounting pad and positioning arm included.**
- **Curved jaws** allow for an **easy handling** of bulky material and a **better penetration and release** of scrap and other debris.
- **Large opening** range.
- **Weld in replaceable tine tips.**



Contractor Grapples						
Type	Opening range A (mm/in)	Dimension D (mm/in)	Upper jaw width E min (mm/in)	Lower jaw width E max (mm/in)	Weight (kg/lbs)	Operating weight (t/lbs)
CG 40	2490 / 98.03	205 / 8.07	710 / 27.95	1015 / 39.96	1080 / 2376	16 - 21 / 35200 - 46200
CG 50	2820 / 111.02	255 / 10.04	760 / 29.92	1120 / 44.09	1350 / 2970	21 - 29 / 46200 - 63800
CG 70	3100 / 122.05	305 / 12.01	815 / 32.09	1220 / 48.03	1800 / 3960	29 - 40 / 63800 - 88000
CG 100	3430 / 135.04	355 / 13.98	865 / 34.06	1270 / 50.00	2550 / 5610	40 - 54 / 88000 - 118800

Package consists of: contractor grapple, positioning arm, mounting pad

Technical Drawings

